

LB2

Product Datasheet



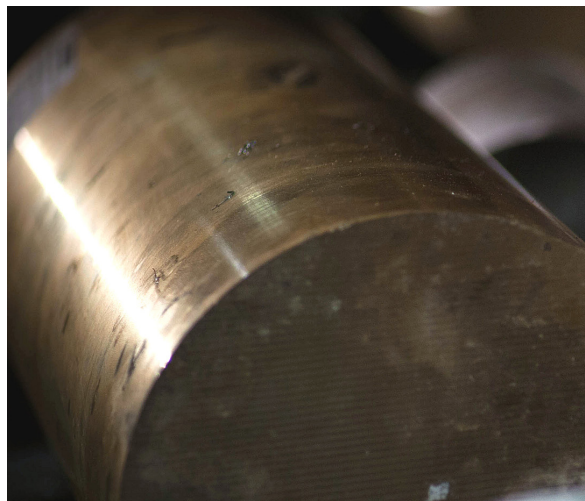
Continuous Cast Leaded Bronze

Service. Quality. Value.

Wear resistance bronze alloy

LB2 is a product which is particularly suitable for the manufacture of bearings.

With good corrosion resistance and excellent wear resistance in high speed environments, LB2 is a continuous cast bronze product. The alloy is an excellent product for use in the manufacture of bearings, especially where there is a lack of adequate lubrication or there are alignment issues. The excellent wear resistance characteristics of the alloy are particularly impressive under conditions of heavy pressure, vibration or high speed. The high lead content and inclusion of tin in this bronze product results in an alloy with increased plasticity.



Typical applications for LB2 include bearings, axle boxes, centrifugal castings and piston rings.

Key Features

- Good wear resistance
- Good corrosion resistance
- Good machinability
- Increased plasticity
- High fatigue resistance

Applications

- High load bearings
- Bearing plates
- Gear wheels
- Centrifugal castings
- Impellers

Chemical Composition (weight %)

	Sn	Pb	Zn	Ni	Fe	Al	P	Sb	Cu
Min	9.0	8.5							
Max	11.0	11.0	1.0	2.0	0.15	0.01	0.1	0.5	Bal

Mechanical Properties (typical)

Yield Strength	Ultimate Tensile Strength	Elongation	Typical Hardness	Compressive Strength 0.1% Permanent Set
160 MPa	280 MPa	15% min	80 BHN	125 MPa

LB2 is available in Rod and Bar.

UK Service Centres:

Smiths Belfast 02895 908 897
Smiths Biggleswade 01767 604 704
Smiths Birmingham 0121 728 4940
Smiths Bristol 0117 971 2800
Smiths Chelmsford 01245 466 664
Smiths Gateshead 0191 469 5428
Smiths Horsham 01403 261 981

Smiths Leeds 0113 307 5167
Smiths Manchester 0161 794 8650
Smiths Norwich 01603 789 878
Smiths Nottingham 0115 925 4801
Smiths Redruth 01209 315 512
Smiths Verwood 01202 824 347
Main Office 0845 527 3331

Quality & Testing:



1930

www.smithmetal.com info@smithmetal.com

All information in our data sheet is based on approximate testing and is stated to the best of our knowledge and belief. It is presented apart from contractual obligations and does not constitute any guarantee of properties or of processing or application possibilities in individual cases. Our warranties and liabilities are stated exclusively in our terms of trading.